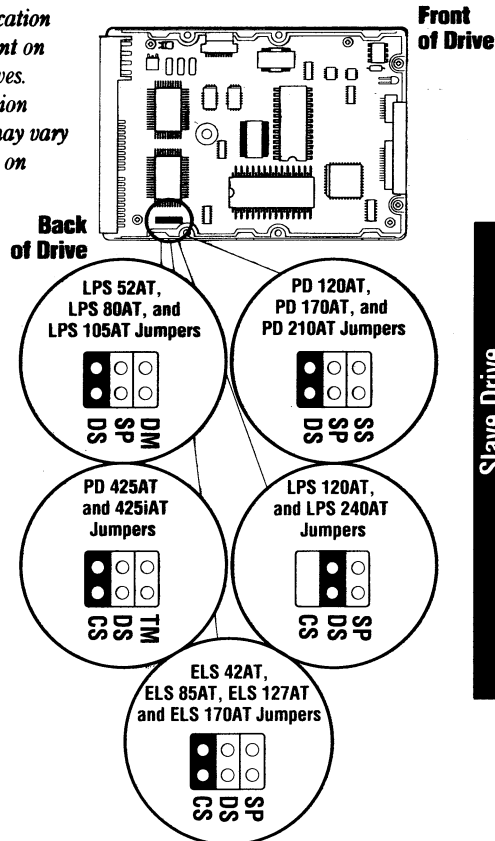


Jumper location is consistent on all AT drives. Chip location and size may vary depending on drive.



The following information pertains only when two hard disks are installed on one cable.

|             |                                     | Master Drive                               |  |                               |                                      |                                  |     |
|-------------|-------------------------------------|--|--|-------------------------------|--------------------------------------|----------------------------------|-----|
|             |                                     | PD 40/80 Master                            | PD 120/170/210/425/425i Master             | LPS 52/80/105 Master          | ELS 42/85/127/170 LPS 120/240 Master | Other Mfg. Master <sup>1</sup>   |     |
| Slave Drive | No Slave                            | Master Only: DS                            |  |                               | Master Only: DS                      |                                  | ??? |
|             | PD 40/80 Slave                      | Master: DS, SS<br>Slave: None              | N/A  | Master: DS, SP<br>Slave: None | N/A                                  | Master: ???<br>Slave: None       |     |
|             | PD 120/170/210/425/425i Slave       | Master: DS, SS<br>Slave: None              | Master: DS, SP <sup>4</sup><br>Slave: None |                               |                                      | Master: ???<br>Slave: SP or None |     |
|             | LPS 52/80/105 Slave                 |  |  |                               | Master: ???<br>Slave: None           |                                  |     |
|             | ELS 42/85/127/170 LPS 120/240 Slave | Master: DS, SS <sup>2</sup><br>Slave: None | Master: DS, SP<br>Slave: None              |                               | Master: DS<br>Slave: None            | Master: ???<br>Slave: None       |     |
|             | Other Mfg. Slave <sup>1</sup>       | Master: SS <sup>3</sup><br>Slave: ???      | Master: DS or DS, SP<br>Slave: ???         |                               |                                      | Master: ???<br>Slave: ???        |     |

<sup>1</sup> See the manufacturer's documentation for jumper configurations.

<sup>2</sup> Include the SS jumper only when the PD40/80 firmware EPROM is 7.0 or greater.

<sup>3</sup> Use the SS jumper alone only when the PD40/80 firmware EPROM is 7.0 or greater, otherwise use the DS jumper.

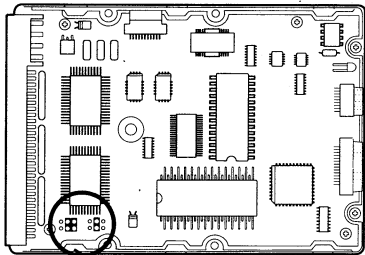
### ProDrive Drive Type Specifications Table

|                        | Model (by Capacity) |          |           |           |          |          |           |           |           |          |          |          |                     |
|------------------------|---------------------|----------|-----------|-----------|----------|----------|-----------|-----------|-----------|----------|----------|----------|---------------------|
|                        | ELS 42AT            | ELS 85AT | ELS 127AT | ELS 170AT | LPS 52AT | LPS 80AT | LPS 105AT | LPS 120AT | LPS 240AT | PD 120AT | PD 170AT | PD 210AT | PD 425AT and 425iAT |
| Formatted Capacity     | 42MB                | 85MB     | 127MB     | 170MB     | 52MB     | 85MB     | 105MB     | 122MB     | 245MB     | 120MB    | 168MB    | 209MB    | 426MB               |
| Logical Cylinders      | 968                 | 977      | 919       | 1011      | 751      | 616      | 755       | 901       | 723       | 814      | 968      | 873      | 1021                |
| Logical Heads          | 5                   | 10       | 16        | 15        | 8        | 16       | 16        | 5         | 13        | 9        | 10       | 13       | 16                  |
| Logical Sectors/Track  | 17                  | 17       | 17        | 22        | 17       | 17       | 17        | 53        | 51        | 32       | 34       | 36       | 51                  |
| Write Pre-compensation | 0                   | 0        | 0         | 0         | 0        | 0        | 0         | 0         | 0         | 0        | 0        | 0        | 0                   |
| Landing Zone           | 968                 | 977      | 919       | 1011      | 751      | 616      | 755       | 901       | 723       | 814      | 968      | 873      | 1021                |
| Sectors Per Drive      | 82,521              | 166,170  | 250,019   | 333,868   | 102,171  | 167,680  | 205,561   | 238,765   | 479,349   | 234,454  | 329,134  | 408,574  | 833,150             |

Note: If you do not have a drive type with the exact logical specifications listed above, we recommend that you choose a user definable drive type or any drive type that does not exceed the total capacity of the drive.

## SCSI Drive Configuration

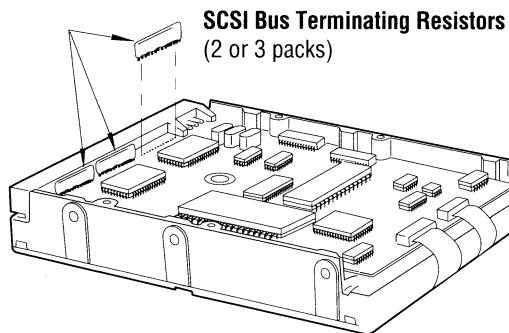
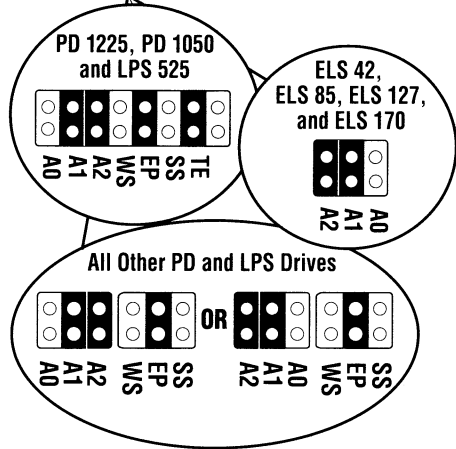
Back of Drive      Front of Drive



*Jumper and Terminator location is constant on all SCSI drives. Chip location and size may vary depending on drive.*

| ProDrive Address Jumpers |     |      | SCSI ID |
|--------------------------|-----|------|---------|
| A2                       | A1  | A0   |         |
| OFF                      | OFF | OFF  | 0       |
| OFF                      | OFF | ON   | 1       |
| OFF                      | ON  | OFF  | 2       |
| OFF                      | ON  | ON   | 3       |
| ON                       | OFF | OFF  | 4       |
| ON                       | OFF | ON   | 5       |
| ON*                      | ON* | OFF* | 6*      |
| ON                       | ON  | ON   | 7       |

\* Indicates the factory default jumper setting.  
ON indicates that the jumper is connected.  
OFF indicates that the jumper is not installed.



Terminating resistors are factory installed. They are required to terminate the SCSI bus when the drive is the last device on the cable. If not the last device, remove all the resistor packs or, on the PD1225/1050 and LPS 525, remove the TE Jumper.

**Quantum**<sup>TM</sup>

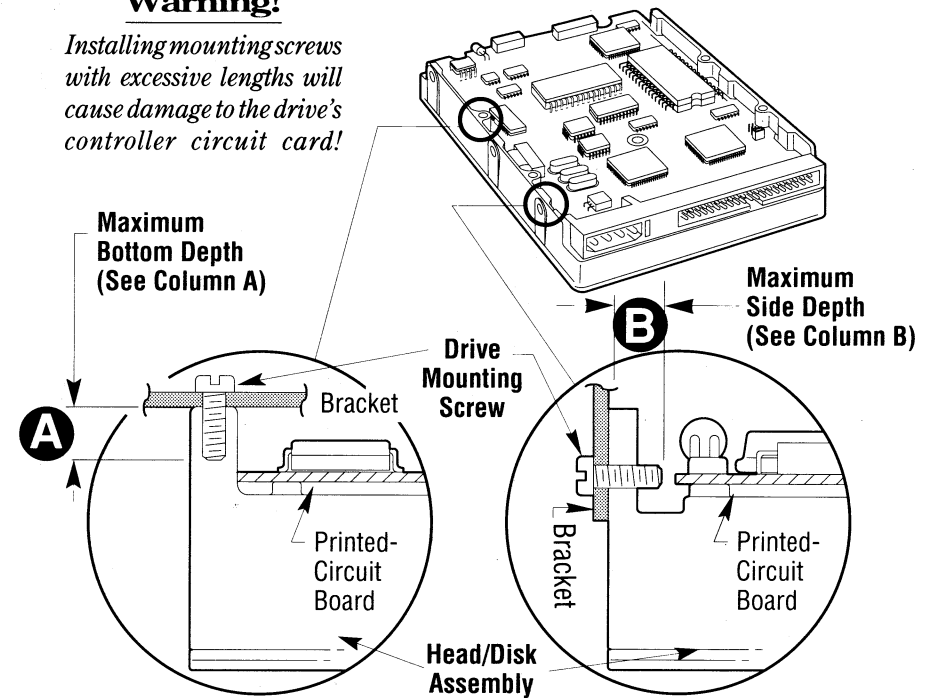
The Quantum logo is a trademark and ProDrive is a registered trademark of Quantum Corporation.  
©1992 Quantum Corporation. All rights reserved. 730-00-0176A

## Quantum ProDrive<sup>®</sup> Configuration Card

### Requirements for Mounting Screws

#### Warning!

*Installing mounting screws with excessive lengths will cause damage to the drive's controller circuit card!*



| Quantum ProDrive Type  | Thread Type | <b>A</b><br>(Max., Bottom Depth) | <b>B</b><br>(Max., Side Depth) |
|--|-------------|----------------------------------|--------------------------------|
| PD 120/170/210/425/425i  | 6-32 UNC    | 0.22 Inches<br>(5.6 mm)          | 0.13 Inches<br>(3.3 mm)        |
| LPS 52/80/105/120/240/525<br>ELS 42/85/127/170<br>PD 1225/1050 | 6-32 UNC    | 0.10 Inches<br>(2.6 mm)          | 0.17 Inches<br>(4.3 mm)        |

### DC Power Connector

